



---

**File Code:** 1010; 5300**Date:** July 28, 2024**Route To:****Subject:** Forest Order No. 06-24-06 – Park Fire Closure Order**From:** Deb Bumpus, Forest Supervisor, Lassen National Forest<sup>db</sup>

I have decided to close the portion of the Lassen National Forest that may be affected by the Park Fire. The Park Fire has exhibited extreme fire behavior, has grown rapidly to over 300,000 acres, and is experiencing very high temperatures and red flag warnings for the area. The closure is necessary to promote public safety within the area and facilitate unimpeded ingress and egress for fire and other emergency responders, as well as owners, lessees and residents of land in the area while limiting public exposure to fire danger and impaired visibility due to smoke. Blow-ups and fire runs are unpredictable, and they pose a serious threat to individuals who are near an uncontrolled fire. Aircraft fire suppression tactics such as retardant drops and water buckets also pose a safety risk to the public. The area closure will keep the public out of the fire's potential pathway and fire suppression tactics perimeter, thereby reducing the risk of public injury or death.

I have decided to exempt all Federal, State or local officer, or member of an organized rescue or fire fighting force in the performance of an official duty. I have also exempted persons with a Forest Permit for Use of Roads, Trails, or Areas Restricted by Regulation or Order (Form FS-7700-48). Authorization under this exemption will only be provided if I or my delegate determine that the risk to personal health and safety is reasonable considering the circumstances of the request. I hereby delegate the authority to sign Form FS-7700-48 granting an exemption to this Forest Order to the District Rangers of the Lassen National Forest. This order also exempts persons who reside within the closure area to the extent necessary to access their residences. We have included this exemption because we are able to effectively monitor the limited roads traveled by residents and a brief traverse along these roads does not pose the same risk as full public access. We may also require appropriate Personal Protective Equipment and/or other safety measures.

Consultation was done externally with CALFIRE, Butte County Sheriff's Office and Tehama County Sheriff's Office. USFS employees with areas of expertise in fire management prevention, law enforcement and public affairs were all contacted and involved in the development of the proposed closure order.

I have concluded that this decision may be categorically excluded from documentation in an Environmental Impact Statement or Environmental Assessment under the National Environmental Policy Act. This action falls within the category identified in 36 CFR 220.6(d)(1) - prohibitions to provide short-term resource protection or to protect public health and safety - and does not require documentation in a decision memo, decision notice, or record of decision. I have determined that there are no extraordinary circumstances associated with this temporary closure. Implementation of the decision may begin immediately.





Forest Order No. 06-24-06  
Lassen National Forest  
**Park Fire Closure**

Pursuant to 16 U.S.C. § 551 and 36 C.F.R. § 261.50(a) and (b), and to provide for public safety, the following acts are prohibited within the Lassen National Forest. This Order is effective from 7/28/2024, through 8/25/2024.

1. Going into or being upon any National Forest System lands within the Park Fire Closure Area, as described in Exhibit A and shown on Exhibit B. 36 C.F.R. § 261.52(e).
2. Being on any National Forest System road within the Park Fire Closure Area, as listed in Exhibit A and shown on Exhibit B. 36 C.F.R. § 261.54(e).
3. Being on any National Forest System trail within the Park Fire Closure Area, as listed in Exhibit A and shown on Exhibit B. 36 C.F.R. § 261.55(a).

Pursuant to 36 C.F.R. § 261.50(e), the following persons are exempt from this Order:

1. Persons with Forest Service Permit No. FS-7700-48 (Permit for Use of Roads, Trails, or Areas Restricted by Regulation or Order), specifically exempting them from this Order.
2. Any Federal, State, or local officer, or member of an organized rescue or fire-fighting force in the performance of an official duty.
3. Owners or lessees of land in the Park Fire Closure Area, to the extent necessary to access their land.

These prohibitions are in addition to the general prohibitions in 36 C.F.R. Part 261, Subpart A.

A violation of these prohibitions is punishable by a fine of not more than \$5,000 for an individual or \$10,000 for an organization, or imprisonment for not more than six months, or both. 16 U.S.C. § 551 and 18 U.S.C. §§ 3559, 3571, and 3581.

Done at Susanville, California this 28<sup>h</sup> day of July, 2024.

---

Deb Bumpus  
Forest Supervisor



Forest Order No. 06-24-06  
Lassen National Forest  
**Park Fire Closure**

**Exhibit A**

The Boundary of the Park Fire Closure Area begins at the intersection of Highway 99 and Skyway in the City of Chico, and proceeds as follows:

1. Starting at the intersection of Highway 99 and Skyway in the city of Chico,
2. heading to the Northeast along Skyway to the intersection of Humboldt Rd.,
3. heading Southwest along Humboldt Rd. to the intersection with Highway 32,
4. then continues Northeast along Highway 32 to the intersection of Highway 36,
5. then continues Northwest along Highway 36 to the intersection of Highway 89,
6. then continues North along Highway 89 west to the intersection with Highway 299,
7. then continues West along Highway 299 to the intersection with Interstate Highway 5,
8. then continues South along Interstate Highway 5 to the intersection with Highway 36,
9. then continues East along Highway 36 to the intersection with Highway 99 in the City of Red Bluff,
10. then continues south along CA99 back to the starting point with Skyway, as shown on the attached map (Exhibit B).



Forest Order No. 06-24-06  
Lassen National Forest  
**Park Fire Closure**

**Exhibit A continued**

It is prohibited to be upon the following roadways and trails inside the Park Fire Closure Area:

ROADWAY NUMBER					
29N48K	34N22	28N24	34N76E	32N16D	31N17O
31N17K	29N52	28N39	32N21Y	32N01XA	28N75
32N31D	29N60D	34N77	32N45A	32N18YB	31N11
32N31G	28N08	27N83A	32N12	32N23Y	32N23YA
28N21D	34N19A	29N62	320312PD09	32N36Y	33N43
28N06A	35N73	32N52YA	31N17N	32N16R	28N14A
34N19F	36N24	32N48Y	34N22B1	34N19	31N99YB
32N17C	32N31H	34N19N	32N89YA	34N19H	29N64
32N86Y	35N23	31N44	33N16G	28N31	34N19J
TE 202	29N62A	32N16F	32N19Y	34N18YA	28N22
27N21A	29N36B	32N25Y	31N48	33N16J	29N22A
32N35Y	29N62	29N21YD	32N16M	27N10	29N44
29N50B	25N18	32N18C	34N18Y	34N77B	32N50Y
34N77C	29N39	33N17A	32N54Y	28N57	32N39Y
28N48A	31N03	32N89YB	32N46A	34N23A	28N89C
30N16D	28N29H	33N55	34N22F	250219PV01	290326PV01
32N36B	28N21A	32N18YC	32N34YB	28N29G	34N38A
29N48A	34N76A	32N25C	32N49	35N15A	28N89B
28N29F	26N68A	31N95YA	29N44F	28N57A	34N78
31N13	27N27	33N36Y	29N62C	32N44Y	31N17P
32N31A	29N48C	33N51A	32N45B	30N16J	31N41A
31N17W	32N56YA	28N23	29N11B	34N76H	26N13
32N16	32N26YA	28N29D	32N31F	28N80	29N36A
30N74	35N35	32N30A	33N10Y	33N25D	29N15Y
35N15H	32N45E	34N03Y	33N17	34N76H1	30N16C
31N17S	29N11YA	33N45C	25N12A	35N35A	32N28A
32N31C	32N46B	31N17	33N45B	32N24B	32N25
32N45YA	34N76G	32N16C	32N25D	34N76F	33N81Y
34N76B	34N19C	26N68	27N60	33N06Y	33N16T
35N35C	31N17V	34N19E	34N60	28N31A	32N47
28N28	31N40	33N35Y	31N12	33N16C	29N32
33N16V	29N62B	28N71	28N89	34N76D	29N04Y
33N25	28N15	28N97	28N06A1	29N48E	34N19L
32N79YA	29N41	31N95Y	29N22	30N17	34N77E





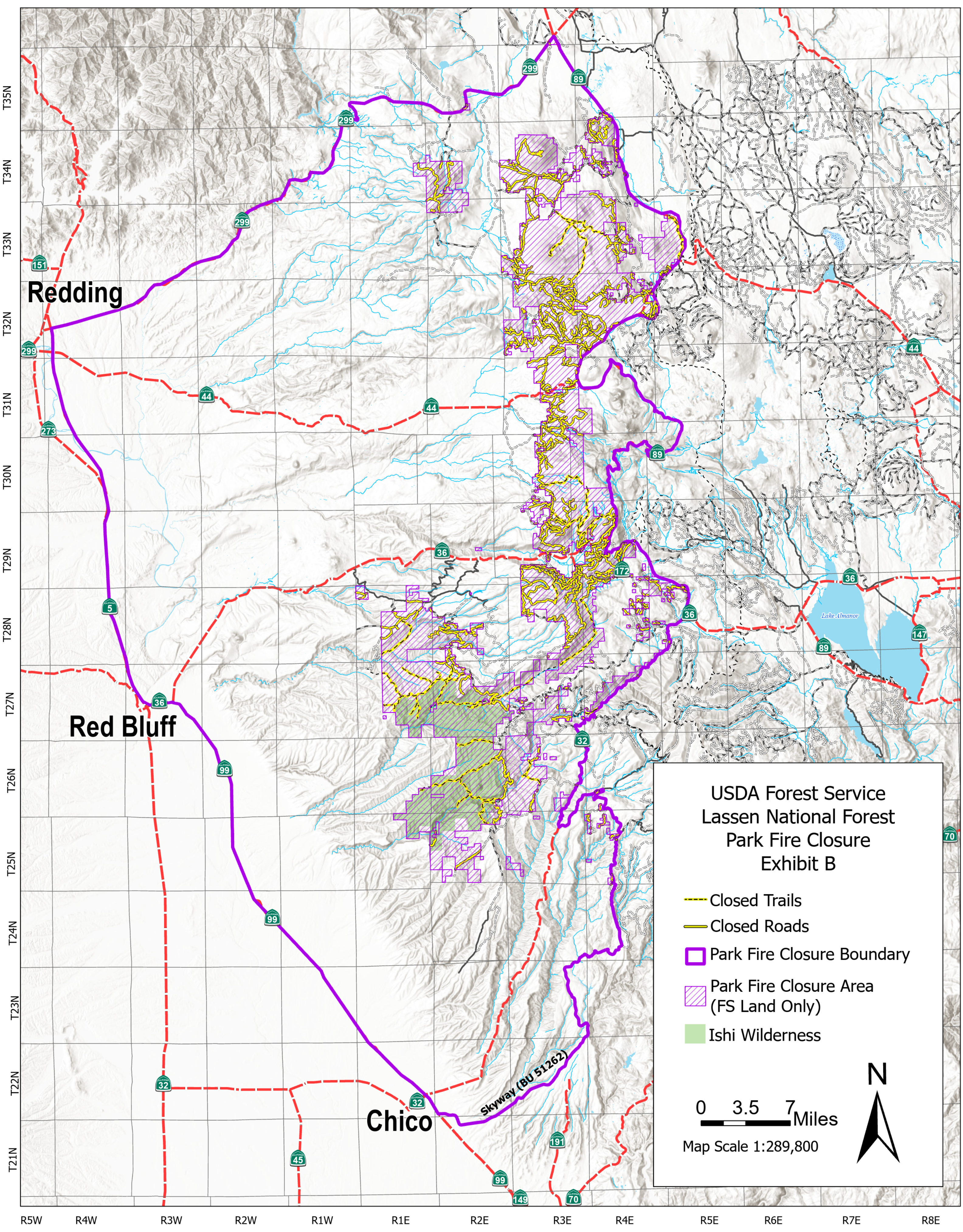
29N24B	33N45	32N33	29N50	32N18Y	34N14
31N17G	30N35E	29N22C	34N76C	32N88Y	33N16L
25N13	29N64YA	TE 774A	29N62D	32N21YA	29N44D
34N22B	33N96	34N22E	29N25	28N21E	32N33A
31N45B	29N48F	29N01Y	35N15G	32N79Y	29N60F
340419PV01	32N66Y	34N19K	29N26	32N31K	27N83
34N14B	28N20	32N74Y	31N17J	34N77D	28N99
33N25G	28N94	29N04E	32N25A	31N99YA	29N64Y
32N16N	32N31E	28N29J	30N35A	33N69Y	32N86YA
29N60B	32N49YB	290427PV06	29N22B	32N01X	28N97C
32N46	29N37	33N69YA	26N65	34N76	28N43
28N97B	29N47	31N17C2	29N21Y	27N27A	29N11
28N27	32N71	32N53Y	29N04B	34N74	31N11A
32N49Y	32N34YA	27N08	34N78B	32N18A	33N51B
29N01YA	32N46D	29N62E	33N88YA	34N19G	29N93
29N11Y	32N30	29N50A	32N26Y	29N36	35N15F
31N17H	28N75A	32N17E	30N74B	29N60G	32N48YA
340326PV01	28N29H1	29N82	33N70Y	34N60A	35N19
34N22C	32N01Y	28N29E	31N48A	32N16A	29N93A
25N16	28N88	28N69	31N17M	27N26	31N40A
34N42	32N96	32N16B	29N64A	32N87YA	31N17R
30N16	34N14A	34N38	31N43	35N73A	
290427PV09	33N16H	32N18	33N23Y	28N88B	
33N45E	32N24	33N80Y	32N17A	32N46Y	
34N19D	29N48G	33N25E	31N17F	34N19P1	
29N60	32N89B	32N50YA	29N48H	33N25F	
29N11A	32N41YB	31N99Y	31N95YB	26N18	
32N09X	31N85Y	32N45C	31N32	34N44	
34N19B	30N56	31N17C1	29N44YA	32N18YA	
29N60A	29N48	32N17D	33N20YA	29N60C	
32N99	TE 770	32N48	26N19	32N45Y	
32N12L	35N15C	34N22D1	32N33Y	29N61	
28N29A	33N45A	31N43A	29N91	33N44	
32N86YB	31N16	32N24A	28N48	29N62A1	
29N61A	28N21C	29N37A	34N19P	34N22A	
29N64C	27N42	34N24	28N94A	29N61B	
32N18D	32N36A	27N08A	28N29	29N44G	
33N25J	34N39	33N16	32N45	32N33YA	
25N23	29N44E	28N08A	33N82Y	TE 707B	
33N20Y	31N17C	33N16B	28N70	34N77A	
CA 172	25N12	35N15B	31N17B1	32N53YA	
31N16A	29N58	28N21	29N80	35N19E	
29N04	29N24C	32N52Y	31N17B2	32N46E	
31N04	SH 3P001	33N25D1	32N24C	290427PV08	
33N45D	29N48M	28N29N	29N81	33N25H	



32N74YA	32N31J	32N41Y	32N34YC	29N64D	
25N12B	35N35B	29N44Y	28N97A	32N17F	
28N06	35N15	33N92	31N37A	31N45A	
31N41	31N35E	33N25L	29N29	27N08C	
32N16E	32N18YD	31N17U	27N21	29N71	
33N16A	31N50	33N51	33N88Y	32N12K	
CA 299	32N29YA	29N24	32N29Y	32N16P	
32N17	32N91	34N78A	32N31	31N45C1	
32N70Y	29N25A	32N89Y	29N10Y	31N17E	
34N19M	32N01YB	28N14	33N49	33N16K	
31N17B	32N17B	33N16F	32N47A	32N96A	
29N44B	32N18G	28N29C	30N15	29N14Y	
26N15	31N37	34N23	30N74C	30N16A	
29N67	33N16E	28N27A	33N25C	32N54YA	
32N41YA	34N42A	31N17T	34N22D	28N57B	
35N73B	32N37Y	25N14	31N35	32N87Y	
30N35	32N46YA	29N21YE	32N01YA	29N58A	
32N56Y	27N08J	32N36	33N16D	27N13	
29N29A	31N45	28N90	28N97D	32N13	
32N28	34N19O	30N16B	32N34Y	32N36C	

TRAIL NUMBER OR NAME		
101	720	318
217	9877	208
418	415	203
302	200	209
312	303	319
305	214	9880
102	109	201
104	300	420
107	321	216
310	Deer Creek Trail	718
304	419	9875
9878	204	410





**Redding**

**Red Bluff**

**Chico**

Skyway (BU 51262)

Lake Almanor

**USDA Forest Service  
Lassen National Forest  
Park Fire Closure  
Exhibit B**

- Closed Trails
- Closed Roads
- Park Fire Closure Boundary
- Park Fire Closure Area (FS Land Only)
- Ishi Wilderness

0 3.5 7 Miles  
Map Scale 1:289,800

T35N  
T34N  
T33N  
T32N  
T31N  
T30N  
T29N  
T28N  
T27N  
T26N  
T25N  
T24N  
T23N  
T22N  
T21N

R5W R4W R3W R2W R1W R1E R2E R3E R4E R5E R6E R7E R8E





Forest Order No. 06-24-05  
Lassen National Forest  
**Park Fire Closure**

Let it be known that Forest Order No. 06-24-05 is rescinded and replaced by Forest Order No. 06-24-06

Done at Susanville, California this 28<sup>th</sup> day of July, 2024.

---

Deb Bumpus  
Forest Supervisor